



# IMPERIAL & WHITEHALL

23 Colmore Row, Birmingham B3 2BP

Premium Offices To Let  
Available Now

[www.imperialandwhitehall.co.uk](http://www.imperialandwhitehall.co.uk)  
[www.thegrandbirmingham.co.uk](http://www.thegrandbirmingham.co.uk)





## IMPERIAL & WHITEHALL

FORMS PART OF THE GRAND, ONE OF BIRMINGHAM'S MOST ICONIC BUILDINGS.

OCCUPYING A PROMINENT AND IMPOSING POSITION ON COLMORE ROW WHICH IS THE CITY'S MOST PRESTIGIOUS ADDRESS WITHIN THE BUSINESS DISTRICT.



### DESCRIPTION

Imperial & Whitehall forms the office element of the historic and impressive The Grand, Birmingham.

Located on the first and second floors, the accommodation is accessed via a reception entrance off Colmore Row and provides exceptionally modern, newly refurbished office suites.

### SPECIFICATION

The specification includes:

- Floor boxes (larger suites only)
- Cat 6 cabling
- Perimeter trunking
- Air conditioning
- Modern LG7 lighting
- Kitchen facilities
- Shower

### ACCOMMODATION

There is a range of suites available from circa 195 sq ft to 2,200 sq ft.

Larger areas of accommodation can be made available by combining suites.

VIEW A VIRTUAL TOUR  
OF THE OFFICES  
ON OUR WEBSITE

[www.imperialandwhitehall.co.uk](http://www.imperialandwhitehall.co.uk)  
[www.thegrandbirmingham.co.uk](http://www.thegrandbirmingham.co.uk)

IMPERIAL & WHITEHALL



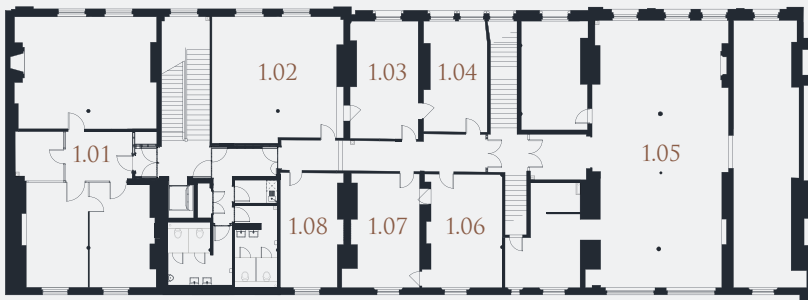
SCHEDULE

FIRST FLOOR

Suite	Sq m	Sq ft
1.01	104.31	1,123
1.02	48.18	519
1.03	23.47	253
1.04	20.73	223
1.05	207.01	2,228
1.06	25.54	275
1.07	23.08	248
1.08	19.88	214
<b>TOTAL</b>	<b>472.20</b>	<b>5,083</b>

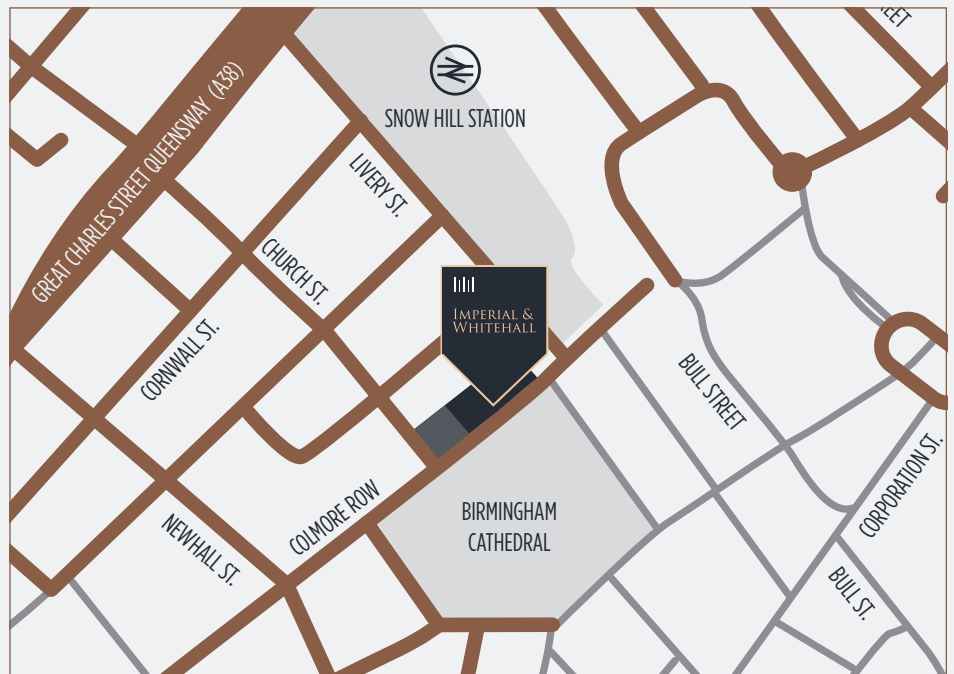
SECOND FLOOR

Suite	Sq m	Sq ft
2.01	107.84	1,161
2.02	48.95	527
2.03	22.09	238
2.04	52.81	568
2.05	271.52	2,923
2.06	25.65	276
2.07	19.99	215
2.08	19.26	207
<b>TOTAL</b>	<b>568.11</b>	<b>6,115</b>





## IMPERIAL & WHITEHALL



### LOCATION

The premises are situated on Colmore Row directly opposite St Philip's Cathedral in the very heart of Birmingham city centre.



**Charles Warrack**  
Charles.Warrack@fishergerman.co.uk  
DDI: 0121 561 7885 M: 07977 512 965

## Carter Jonas

**Alex Tross**  
alex.tross@carterjonas.co.uk  
DDI: 0121 306 0401 M: 07789 027 191

Disclaimer: Fisher German and Carter Jonas on their behalf and for the vendors or lessors of this property whose agents they are, give notice that: 1. These particulars are set out as a general outline only for guidance to intending purchasers or lessees, and do not constitute any part of an offer or contract. 2. Details are given with out any responsibility and any intending purchasers, lessees or third parties should not rely on the mas statements or representations of fact, but must satisfy themselves by inspection or otherwise as to the correctness of each of them. 3. No person in the employment of Fisher German and Carter Jonas has any authority to make any representation or warranty whatsoever in relation to this property. 4. Unless otherwise stated, all prices and rents are quoted exclusive of VAT. 2023. Note: All plans, photographs and CGIs are for identification purposes only. 2023.  
Designed and produced by: Barques t 0121 233 2080 w barques.co.uk