



FIFTEEN  
COLMORE ROW

**7,227 SQ FT PREMIUM  
OFFICES TO LET**

[fifteencolmorerow.co.uk](http://fifteencolmorerow.co.uk)

Refurbished Grade A  
office accommodation  
centrally located  
within the Colmore  
Business District.





Located in the heart of Birmingham city centre, opposite St Philip's Cathedral and adjacent to Snow Hill Station, Fifteen Colmore Row provides newly refurbished contemporary grade 'A' office accommodation.



# Newly refurbished Grade A accommodation

Specification details include:



Comfort cooling



Raised access floors



LED lighting



Refurbished shower and changing facilities



Concierge reception



Secure bicycle parking



Communal business lounge with kitchen facilities



Communal roof terrace



EPC rating: B

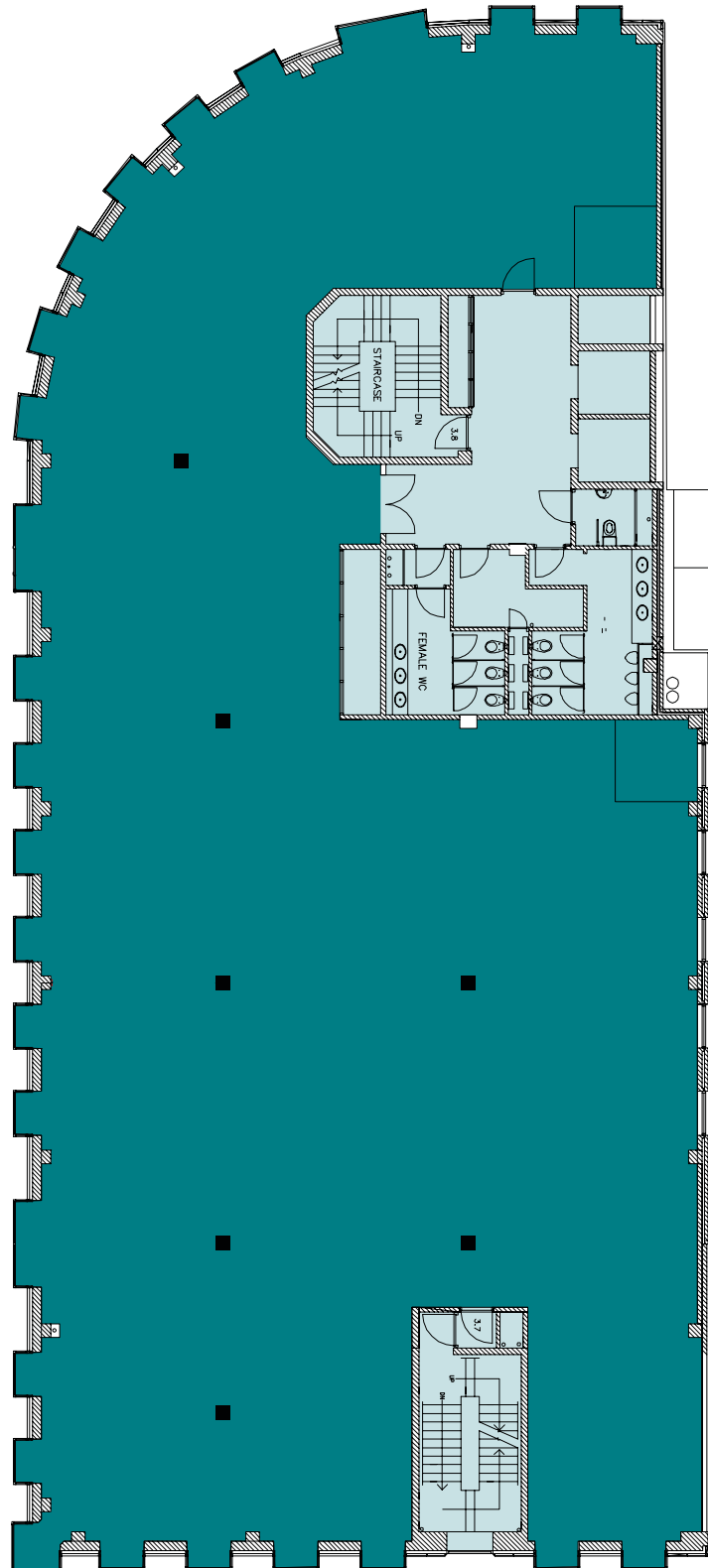
---



# Open plan floorplates

## Typical Floor

7,227 sq ft (671.4 sq m)



Office

Core

Masterplan for indicative purposes only. Not to scale.

# Space plan

## Indicative space plan

7,227 sq ft (671.4 sq m)



Office

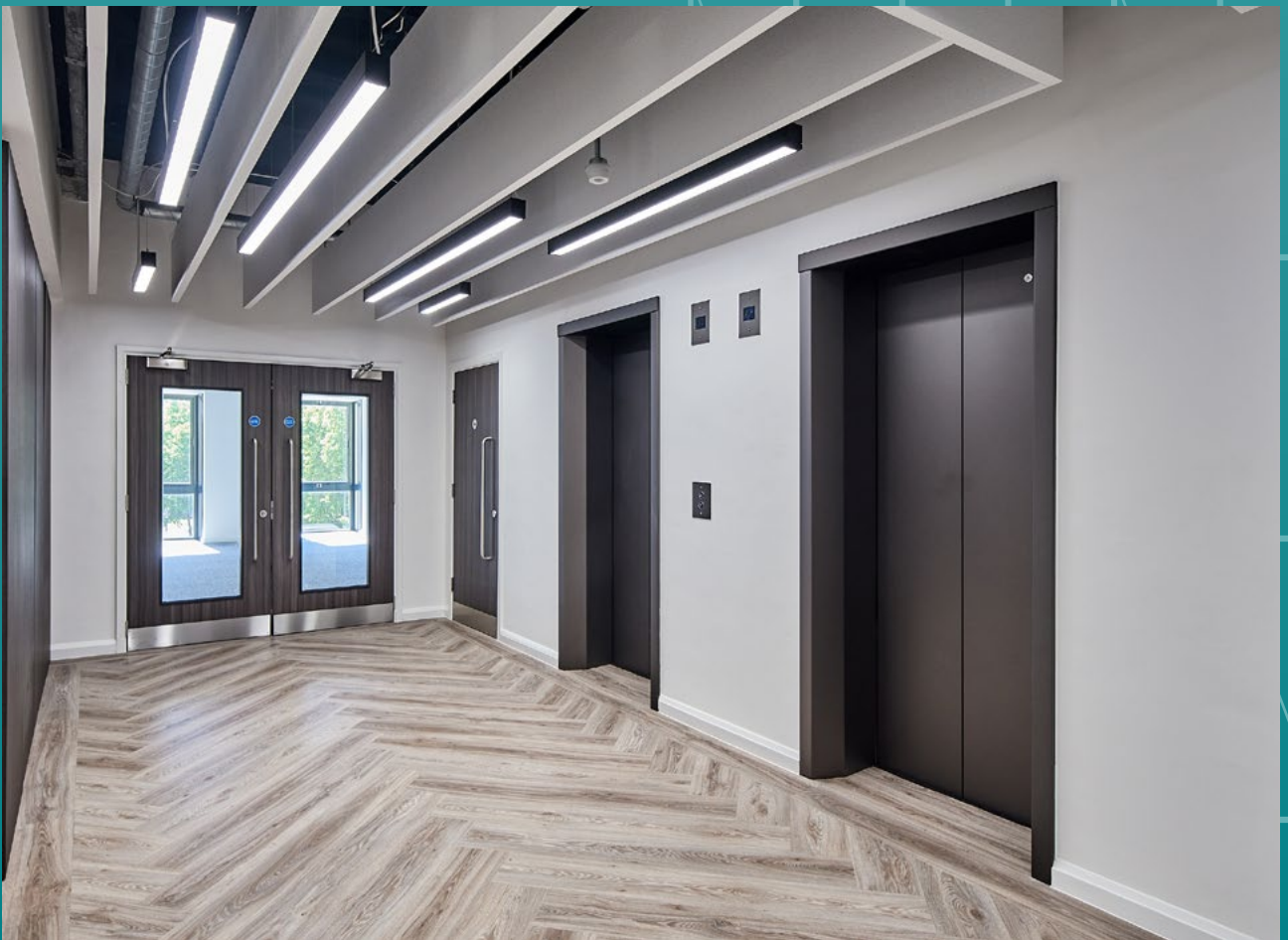
Core

Masterplan for indicative purposes only. Not to scale.



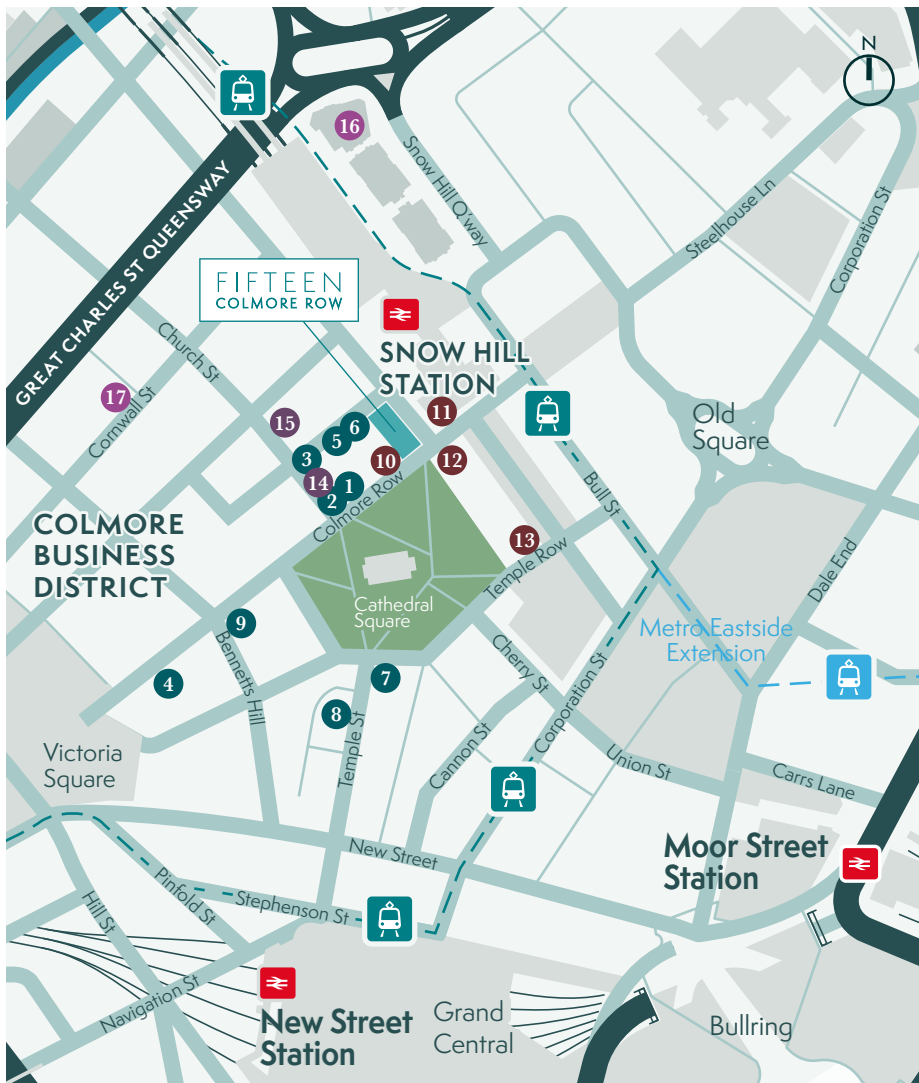






# Birmingham and beyond

The building is in the heart of Birmingham's Colmore Business District which offers an impressive array of retail, leisure and entertainment venues.



## Bars & Restaurants

1. The Alchemist
2. Gusto Italian
3. Isaac's
4. The Colmore
5. Tattu
6. Primitivo
7. The Ivy
8. San Carlo
9. Vagabond

## Cafés & Lunch

10. 200 Degrees
11. Costa
12. Pret A Manger
13. morridge oats + coffee

## Hotels

14. The Grand Hotel
15. Hotel du Vin

## Gyms

16. MK Health Club
17. Blaze Studio



## Connectivity

15 Colmore Row is located in close proximity to the train stations at Snow Hill and New Street which provide regular services to local, regional and national destinations including Birmingham International Airport. Whilst the building also benefits from excellent road connections as it is located less than 4 miles away from the M6 which provides good access to the wider motorway network. Local bus routes and the Midlands Metro also provide good connectivity across the city.

### Walking times (from the building)

**>01 mins**

Great Western Arcade

**01 mins**

Snow Hill Station 

**05 mins**

New Street Station 

**08 mins**

Bullring Shopping Centre

**09 mins**

Moor Street Station 

**09 mins**

HS2 Curzon Street

### Travel times by train

**1 hr 24 mins**

London Euston  
(From New Street Station)

**1 hr 32 mins**

Manchester Piccadilly  
(From New Street Station)

**14 mins**

Birmingham International  
(From New Street Station)

**21 mins**

Coventry  
(From New Street Station)

**14 mins**

West Brom  
(From St Chads via Metro)

**26 mins**

Wolverhampton  
(From Snow Hill Station)





## Further information

For further information or to arrange a viewing, please contact our joint letting agents.



### Jonathan Carmalt

E: [jonathan.carmalt@jll.com](mailto:jonathan.carmalt@jll.com)  
M: +44 (0) 7967 184 245

### Evie Davies

E: [evie.davies@jll.com](mailto:evie.davies@jll.com)  
M: +44 (0) 7561 878 180



### Will Higgins

E: [william.higgins@knightfrank.com](mailto:william.higgins@knightfrank.com)  
M: +44 (0) 7811 849 288

### Sam Benson

E: [sam.benson@knightfrank.com](mailto:sam.benson@knightfrank.com)  
M: +44 (0) 7581 043 824

[fifteencolmorerow.co.uk](http://fifteencolmorerow.co.uk)

#### Misrepresentation Act

Knight Frank on their own behalf and for vendors or lessors of this property, whose agents they are, gives notice that: 1/ The particulars are produced in good faith, but are a general guide only and do not constitute any part of a contract. 2/ No person in the employment of the agent(s) has any authority to make or give any representation or warranty whatsoever in relation to this property. 3/ The property is offered subject to contract and unless otherwise stated all rents are quoted exclusive of VAT. 4/ Nothing in these particulars should be deemed a statement that the property is in good condition, or that any services or facilities are in working order. 5/ Unless otherwise stated, no investigations have been made regarding pollution, or potential land, air or water contamination. Interested parties are advised to carry out their own investigations if required. 2023. Designed by Barques. [www.barques.co.uk](http://www.barques.co.uk)